

Last Issue Date: 30.01.12

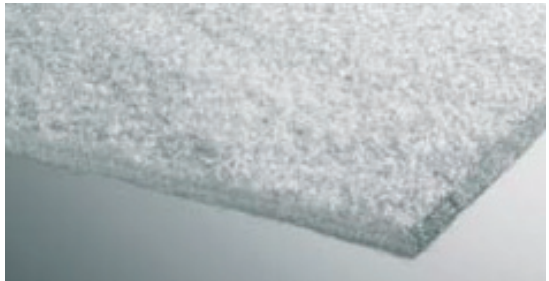
## Solco Protection Systems

Solco supply a range of high quality protection systems which can be used within the Solco damp proofing & Gas protection systems to ensure the integrity protection of installed membranes.

### Solco Protection Fleece (SP30)

#### Description

SP30 is a medium duty protection system to prevent installed membranes from accidental damage. SP30 is manufactured from 100% polypropylene continuous-filament needle-punched nonwoven geotextile.



#### Application

SP30 protects loose laid membranes against accidental damage from following trades or the process of the installation of structural reinforcement prior to concrete being laid. SP30 can also be used beneath Solshield Gas Protection Membranes. SP30 is designed for medium duty protection applications, for heavy duty applications please use Solco HD range of protection boards.

#### Installation

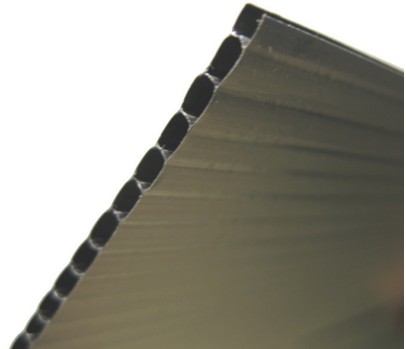
SP30 rolls are loose laid over the membrane and adjacent sheets should be overlapped by at least 150mm and secured using Solco Single Sided Lapping Tape. Ensure surfaces are clean and dry prior to application of tape. In windy conditions SP30 should be weighted down to ensure the fleece remains in position.

Dimension Properties		
Roll Width		2m
Roll Length		50m
Colour		White
Technical Data		
Tensile Strength EN ISO 10319	MD kN/m	20
	CD kN/m	20
Elongation EN ISO 10319	MD kN/m	80
	CD kN/m	75
CBR Puncture Resistance kN EN ISO 12236		2.35
Mass per unit area g/m2 EN ISO 9864		300

### Solco Temporary Protection Board

#### Description

Solco temporary boards are medium duty protection system to prevent installed membranes from accidental damage. The Protection board is an extruded fluted board made from polypropylene granules. The Temporary protection boards are manufactured to Quality Assurance Standard IS09002 and Environmental Standard IS09002.



#### Application

Temporary protection boards protect loose laid membranes against accidental damage from following trades or the process of the installation of structural reinforcement prior to concrete being laid, it can also be used beneath Solshield Gas Protection Membranes. The temporary protection boards are designed for medium duty protection applications, for heavy duty applications please use Solco HD range of protection boards.

#### Installation

Temporary protection boards are loose laid over the membrane and adjacent sheets should be secured using Solco Single Sided Lapping Tape, using a stanley knife the boards can be easily cut to size and fitted. Ensure surfaces are clean and dry prior to application of tape.

Dimension Properties	
Sheet Width	1.220m
Sheet Length	2.440m
Thickness	2mm
Colour	Black
Technical Data (BS 3924:1978)	
Slip resistance - Dry BS7976-2:2002 (Pendulum method)	72 (P.T.V.'s)
Slip resistance - Wet BS7976-2:2002 (Pendulum method)	49 (P.T.V.'s)
Crush Resistance (2mm / 250gsm)	300 kN/m2
Stiffness / Flexibility (BS7424: 1991)	200mNm

## Solco HD Bitumen Protection Board



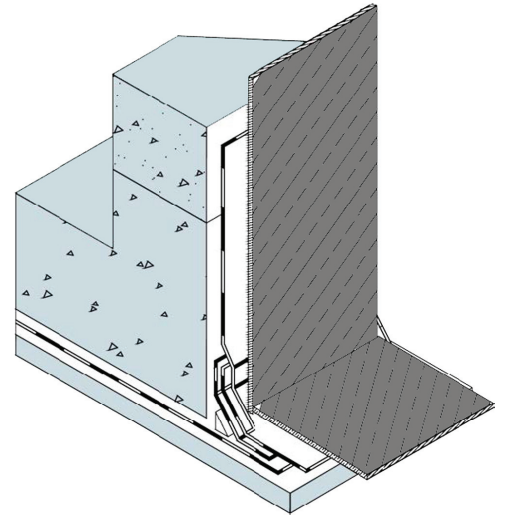
- Weather, warp and rot proof
- Excellent flexibility
- High puncture resistance
- Excellent resistance to chemicals
- Compatible with most waterproofing systems

### Description

Solco HD Bitumen Protection Board is a tough, reinforced flexible bitumen modified board for the protection of adhesive waterproofing membrane and other types of waterproofing membranes against damage by abrasive backfill materials and poured concrete

### Application

To fix the HD protection boards, double sided tape or adhesive should be used to fix the protection board to the membrane. Lap joints using Solco single sided lapping tape should be staggered as well as staggered over the membrane laps.



### Installation

In horizontal applications, boards are loose laid and closely butt jointed. To prevent lateral movement the boards should be overtaped with Solco single sided lapping tape. Jointing applied equidistant over the junction. Ensure surfaces are clean and dry prior to application of tape. Apply pressure to the tape to ensure adhesion.

Dimension Properties		Technical Data	
Sheet Width	1.0m	Bitumen Content	>75%
Sheet Length	2.0m	Flexibility at 250°C	Pass
Thickness	3mm / 6mm	Softening Point	1400°C
Weight	8kg / 16kg	Heat Resistant at 800°C	No Flow
Colour	Black	Water Permeability	Impermeable

In vertical applications, boards should be strip bonded to the membrane with Solco double sided butyl tape and the joints over-taped with Solco single sided lapping tape applied equidistant over the junction. Ensure surfaces are clean and dry prior to application of tape. Apply pressure to the tape to ensure adhesion.

**Note:** The Typical Data shown in this leaflet is intended as a general guide and is based on tests carried out under controlled conditions. For further information on Product Specification consult Solco Building Products.

### Solco System Accessories

Technical Data				
SOLCO Single Sided Lapping Tape	Single sided tape for securing laps & joints	75mm	Securing Laps & Joints	Rolls
SOLCO Double sided Butyl Jointing Tape	Butyl Adhesive Tape	50mm x 10m 100mm x 15m	Butyl based double sided tape for joints and laps	Rolls
SOLCO Top Hat Units	Polymeric	Various	For sealing around penetrations through gas membrane	Each
SOLCOURSE GR DPC	A flexible polyethylene DPC with an aluminium foil	300mm - 1000mm	To prevent the transmission of Radon, CO2 & Methane Gas	20m Rolls
SOLCO Gas Sump Units	Part of the Radon Protection System	430 x 430 x 220mm	Radon Sumps are used in full protection areas, for sub floor depressurisation.	Each
SOLCO XL Jointing Tape	Reinforcing Tape	100, 150 & 300mm	Over-band tape self-adhesive	20m Rolls
SOLCO Primer	Primer for SA Membrane	5L & 25L	Surface Primer	Drums
SOLCO Protection Boards	Bitumen / Polymeric	3mm thick	For heavy duty use	2m x 1m
SOLCO Corrugated Board	Plastic Corrugated	2mm thick	For light duty use	2m x 1m