

SOLCO WATERPROOFING & GAS PROTECTION SYSTEM ACCESSORIES



Solco supply a range of high quality construction related waterproofing membranes and damp proof courses. The following components are used within the Solco Waterproofing & Gas protection systems to ensure effective jointing, continuity and protection.

- Solco Double Sided Butyl Tape
- Solco Preformed 'Top Hat' Pipe Collars
- Solco XL Jointing / Reinforcing Tape
- Solco XL Gas Resistant Jointing / Reinforcing Tape



SOLCO - System Components

Last Issue Date: 26.02.18

Solco Double Sided Butyl Tape

Solco Double Sided Butyl Tape is a preformed high performance polyisobutylene (PIB) based sealing tape with enhanced adhesive characteristics for more demanding applications where there are requirements for a high degree of bonding such as cavity trays & polythene membranes. Solco Double Sided Butyl Tape has an excellent adhesion to a wide range of substrates, with good UV resistance and remains flexible throughout its service life.

Application

Tape for bonding waterproofing and gas protection membranes at overlaps and for bonding membranes to DPCs, and fixing of other accessories such as top hats.

Installation

Ensure all surfaces are clean and dry. Apply tape to the lap area of the laid sheet starting approx 50mm from the membrane edge. Overlap adjoining membrane by minimum 150mm and remove tape release paper. Apply pressure to the jointed area to ensure adhesion. When the weather is cold, store tape in a warm, dry place until required. Installation is not recommended below 5°C.



Dimension Properties	
Roll Width	50 / 100mm
Roll Length	10m
Colour	Black
Technical Data	
Shelf Life	24 Months
Life Expectancy	>25 Years
U.V. Resistance	Excellent
Service Temperature	-40°C to +90°C
Joint Movement	up to 15%
Dynamic tensile tension: Separation rate 100mm/min @ 20°C	20 N/cm ²
Dynamic Shear: Separation rate 200mm/min @ 20°C	22 N/cm ²
Moisture vapour transmission rate : BS 15106-3	0.010 g/m ² /24hr/mm at 25°C & 75% RH

Solco Preformed 'Top Hat' Pipe Collars

Description

A black, rigid polyethylene preformed pipe sleeve unit, available for either 110mm or 135mm external diameter pipes.

Application

Pipe sleeve for effective damp protection around service pipe penetrations.

Installation

Ensure surfaces are clean and dry. Cut a circular hole in the DPM as close as possible to the pipe. Apply Solco Double Sided Butyl Tape to the underside of the unit flange. Remove tape release paper, slide the unit over the pipe and bond to the membrane.

Apply pressure to the jointed area to ensure adhesion. Apply Solco Single Sided Foil backed jointing tape equidistant over the unit flange/membrane lap. Apply pressure to the tape to ensure adhesion. When the top hat is in place using Solco single sided tape, seal the edge of the horizontal skirt to the membrane. Secure the top hat to the pipe by using a jubilee clip.

(For more detailed information on how to make a gas tight seal around pipe penetrations please refer to the details on Page 3).



Solco XL Jointing / Reinforcing Tape

Solco XL Jointing Tape is a 1.5mm thick preformed bitumen compound which is laminated onto an impervious, non-perforated, cross laminated HDPE film.

The tape is protected on the self adhesive side with a silicone coated release film. SOLCO XL Jointing Tape conforms to the requirements of BS 8102 as part of the waterproofing system.

Substrates should be primed with SOLSEAL Bitumen Primer prior to application.

Application

A single sided reinforcing / over-banding tape for securing waterproofing membranes at overlaps edge and corner details.

Installation

Ensure surfaces are clean and dry. Apply tape equidistant over the bonded membrane lap. Apply pressure to the tape to ensure adhesion. When the weather is cold, store tape in a warm, dry place until required. Installation is not recommended below 5°C.



Product Details	
Thickness	1.5mm
Widths (m)	100mm / 150mm / 300mm
Length (m)	20m
Roll Weight	3kg / 4.5kg / 9Kg
Colour	Black

Solco XL Gas Resistant Jointing / Reinforcing Tape

Solco XL Gas Resistant Jointing Tape is a preformed bitumen compound with resistance to Methane, Radon and Carbon Dioxide. Resistance to gas is achieved with a high density polyethylene film (PE) reinforcement bonded to 50-micra aluminium foil, an easily removable silicone film on the underside and thermofusible film on the upper side.

Solco XL Gas Resistant Jointing Tape conforms to the requirements of BS 8102 as part of the Gas Protection System. Substrates should be primed with SOLSEAL Bitumen Primer prior to application. Solco XL Gas Resistant Jointing Tape can be used with Solcourse range of GR DPC's and other Solshield Gas Membranes

Application

A single sided reinforcing / over-banding tape for securing waterproofing membranes at overlaps edge and corner details.

Installation

Ensure surfaces are clean and dry. Apply tape equidistant over the bonded membrane lap. Apply pressure to the tape to ensure adhesion. When the weather is cold, store tape in a warm, dry place until required. Installation is not recommended below 5°C.



Product Details	
Thickness	1.5mm
Widths (m)	100mm / 150mm / 300mm
Length (m)	20m
Roll Weight	3kg / 4.5kg / 9Kg
Colour	Black

Solco Radon Gas Sump Units

Solco Radon Gas Sump Units are part of the Radon Protection System, and are required where sub floor depressurisation is required under full protection.

Application

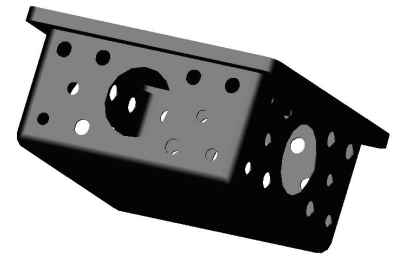
Solco Radon Sumps are prefabricated plastic units designed to act as a collection point for radon gas prior to it being ventilated away.

The sump is installed beneath the floor slab in non suspended floor applications and vented to atmosphere.

Typically a 110mm venting pipe is connected to the sump, and passes through the external wall and brought out above ground level and is connected to an external source and capped off with proprietary products i.e. air bricks & telescopic under floor vents or roof vents

Installation

- A pit should be excavated to ensure that for maximum depressurisation, any fill used beneath the slab does not contain excessive fines.
- The Radon sump is connected with a 110mm diameter PVC-U pipe to one outlet of the sump.
- Extend the pipe horizontally so that it passes through the external wall.
- Ensure that all joints and couplings are airtight.
- Backfill using a clean permeable material.
- Terminate the pipe just above ground level, and cap it.
- Connect to an external source and cap off with proprietary products.
- Provide a plate on the wall to indicate the presence of the radon exhaust pipe.
- Typically sumps are installed either at every 15m radius or 1 number unit per dwelling.



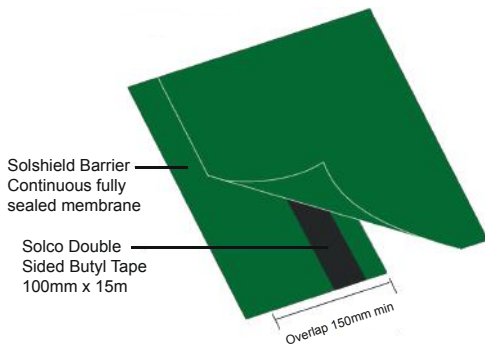
Product Details

Height	220mm
Widths	430mm
Length	430mm

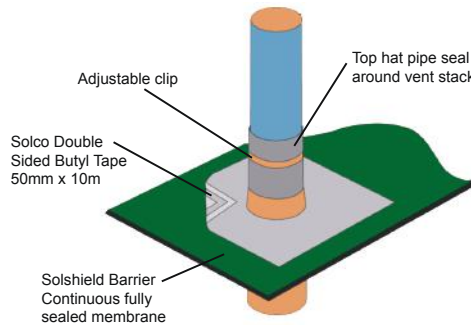
SOLCO - System Components

Last Issue Date: 26.02.18

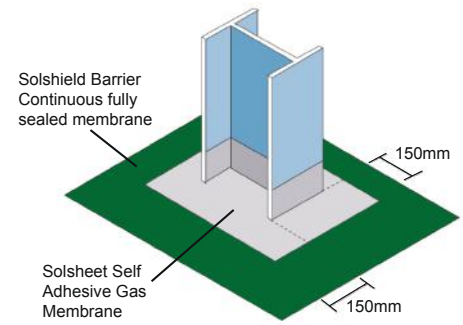
Typical Jointing Details for Waterproofing & Gas Protection Systems



Typical Lap Detail



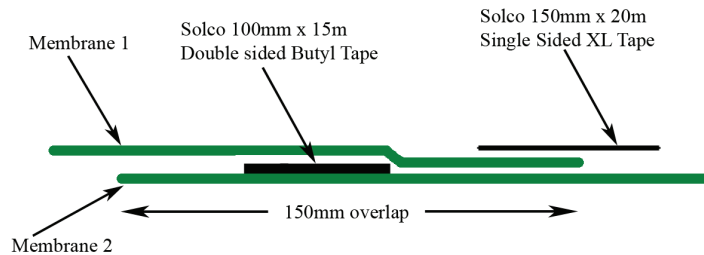
Typical Penetration Detail



Typical Column Detail

Note:

All service entry points must have airtight seals. Top hats and corner pre-forms must be sealed using double sided butyl tape.



Product	Description	Sizes	Application	Supply
Solco Double sided Butyl Jointing Tape	Butyl Adhesive Tape	50mm x 10m 100mm x 15m	Butyl based double sided tape for joints and laps	Rolls
Solco Top Hat Units	Polymeric	Various	For sealing around penetrations through gas membrane	Each
Solcourse Hydrocarbon DPC	A flexible Tri-polymer DPC	300mm - 1000mm	To prevent the transmission of Radon, CO ₂ , Methane Gas & Hydrocarbons	20m Rolls
Solco Radon Sump Units	Part of the Radon Protection System	430 x 430 x 220mm	Radon Sumps are used where sub floor depressurisation may be required.	Each
Solco XL Jointing Tape	Reinforcing Tape	100, 150 & 300mm wide	overband tape self-adhesive	20m Rolls
Solseal Bitumen Primer	Primer for SA Membrane	5L & 25L	Surface Primer	Drums
Solco Protection Boards	Bitumen / Polymeric	3mm thick	For heavy duty use	2m x 1m
Solco Corrugated Board	Plastic Corrugated	2mm thick	For light duty use	2m x 1m