

Last Issue Date: 22.12.11

SOLCOURSE Cavity Trays



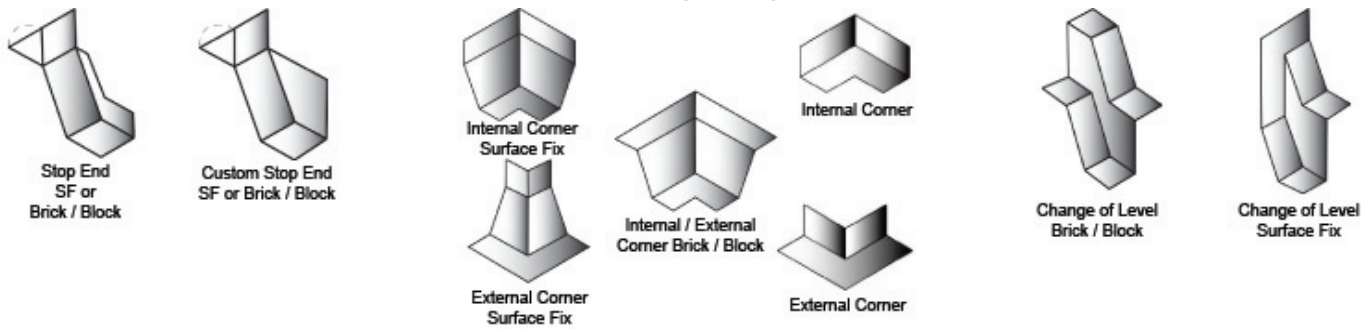
Description

The Solcourse preformed cavity trays are part of the DPC system which ensure continuity of protection at difficult changes of level, corners and penetrations and also ensure gas tightness in the Gas Protection Systems. Since they are preformed they reduce time and provide a simplified method of installation.

Cavity trays are available in a range of colours to suit facing brickwork or stonework and as well as the range of standard profiles, special units are also available upon request.

BS5268 Part 3 stipulates that where awkward junctions occur in the building or there are protrusions within the cavities such as columns, steel supports these profiles should be formed from factory welded preformed units and not cut and stuck on site.

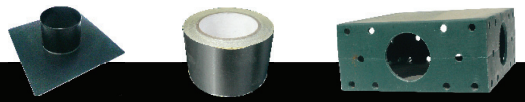
Standard Cavity Tray Profiles



Change of Level Unit		Change of Level (Surface Fix)		Stop End / Column Stop End		Internal / External Corner
Cavity Size	Step on Face	Cavity Size	Step on Face	Cavity Size	Step on Face	Cavity Size
150/50 RH	75mm	150/50 RH	75mm	150/50 RH	10RH + 10LH	150/50
150/50 LH	75mm	150/50 LH	75mm	150/75 LH	10RH + 10LH	150/75
150/75 RH	75mm	150/75 RH	75mm	225/50 RH	10RH + 10LH	225/50
150/75 LH	75mm	150/75 LH	75mm	225/75 LH	10RH + 10LH	225/75
150/50 RH	225mm	150/50 RH	225mm			
150/50 LH	225mm	150/50 LH	225mm			
150/75 RH	225mm	150/75 RH	225mm			
150/75 LH	225mm	150/75 LH	225mm			

External Corner (Surface Fix)	
Cavity Size	
150/50	
150/75	

DPC System Accessories



Technical Data				
SOLCO Foil Backed Jointing Tape	Single sided tape for securing laps & joints	75mm x 50m	Securing Laps & Joints	Rolls
SOLCO D/sided Butyl Jointing Tape	Butyl Adhesive Tape	50mm x 10m	Butyl based double sided tape for joints and laps	Rolls
SOLCO Top Hat Units	Polymeric	Various	For sealing around penetrations through gas membrane	Each
SOLCOURSE GR DPC	A flexible polyethylene DPC with an aluminium foil	300mm - 1000mm	To prevent the transmission of Radon, CO2 & Methane Gas	20m Rolls
SOLCO Gas Sump Units	Part of the Radon Protection System	430 x 430 x 220mm	Radon Sumps are used in full protection areas, for sub floor depressurisation.	Each
SOLCO XL Jointing Tape	Reinforcing Tape	100, 150 & 300mm	Over-band tape self-adhesive	20m Rolls
SOLCO Primer	Primer for SA Membrane	5L & 25L	Surface Primer	Drums
SOLCO Protection Boards	Bitumen / Polymeric	3mm thick	For heavy duty use	2m x 1m
SOLCO Corrugated Board	Plastic Corrugated	2mm thick	For light duty use	2m x 1m