

# SOLCOURSE HP DPM

## High Performance DPM

Solcourse High Performance DPM is suitable for use in domestic and commercial applications where heavy duty foundations and slabs are used and where a more robust membrane is required.

- CE Marked
- BBA Agreement Certified
- Complies with requirements of the UK Building Regulations
- High Strength & Puncture Resistant
- Suitable for use with the Solco DPC System Accessories



Colour	Product Code	Roll Sizes
Orange	SOLCOURSEHPDPM	4m x 12.5m

## SOLCOURSE - DPC / DPM Systems

Last Issue Date: 22.03.15  
Rev 1

### Product Description

Solcourse HP Polythene Damp Proof Membrane is BBA approved and CE Marked in accordance with BS EN 13967: 2004

Sheet Thickness	Sheet Size	Roll Weight
500 mu / 2000 guage	4m x 12.5m	23 kg

The heavy duty membrane is centre folded which reduces the amount of creases which aids in the installation and jointing on site. This membrane is particularly suited for applications where heavy duty foundations and steel reinforced slabs are to be installed and where a durable, robust and high puncture resistant membrane is better suited.

Solcourse HP DPM is fully compliant with the standards for damp proof membranes as required by the UK building regulations. Damp Proof Membrane provides a barrier for moisture, usually used within building foundations it can also be used for a range of other damp proofing applications. Solcourse HP DPM is suitable for use in concrete floors in domestic and commercial (schools, hospitals leisure, shopping centres etc.) applications, in accordance with clause 11 of CP 102:1973, where there may be capillary rise of moisture but not where it may be subject to hydrostatic pressure.

Solcourse HP DPM should be jointed using welding for the most demanding installations or jointed using the range of Solco Tapes and ancillary items for all other instances (as shown below).

Solcourse can also produce DPM in a range of sizes and specifications to meet your specific needs.

### Installation

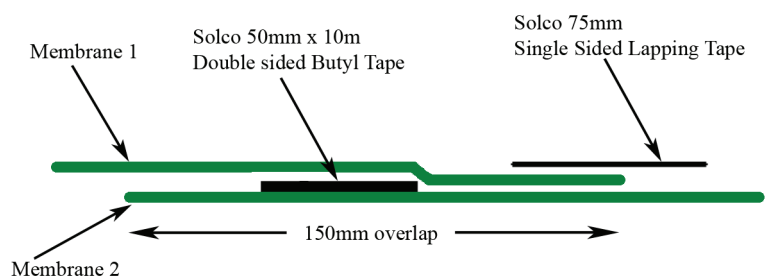
When installing a DPM, even though it has a high puncture resistance care should always be taken to avoid accidental damage and a suitable blinding should be used. Where the area is subject to high foot traffic temporary protection boards should be used to maintain the integrity of the membrane and its jointing.

### Jointing & Surface Fixing

When jointing Solcourse HP membrane a minimum of 150mm is to be joined / adhered using the Solco Double Sided Butyl Tape between membranes and the 75mm single sided lapping tape to seal the outer edge and provide a continuous bond.

In order to provide effective protection the bond between the dpm and the dpc should be continuous.

To ensure a satisfactory bonding is made, the Solco range of system accessories should always be used.



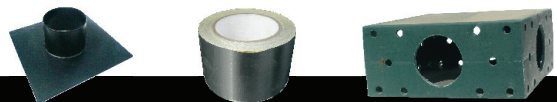
Typical Jointing Detail

Dimension Properties	
Thickness (mu / guage)	500
Roll Width	4m
Roll Length	12.5m
Colour	Orange
Roll Weight	23kg
Technical Data	
Resistance to Tearing (Nail) (Max Load N) BS 747(MOAT 27:5.4.1) / BS 2782-3.360B	>247
Tensile Strength (N/mm <sup>2</sup> ) BS 2782-3.320A	21.20
Elongation BS 2782-3.320A	695%
Visible Defects	None
Mass Per unit Area BS EN 12311-1	460g/m <sup>2</sup>
Watertightness BS EN 1928 - Method A	Pass
Moisture Vapour Transmission Rate (g/m <sup>2</sup> /day) BS3177 (25°C / 75% RH)	0.15
Moisture Vapour Resistance (MNsg <sup>-1</sup> ) BS3177 (25°C / 75% RH)	1368
Impact Resistance BS EN 12691	Pass
Durability against ageing BS EN 1926	Pass
Durability against ageing BS EN 1874	Pass

### Storage & Handling on site

SOLCOURSE HP Membrane is classified as non-hazardous (code of practice CP102 1973). The product is chemically inert and any acids or alkalis present in the subsoil will not affect the membrane. It is not recommended for use when exposed to sunlight and general outdoor weather conditions for long periods of time. Weathering will not occur when installed. Rolls should be stored undercover. Quality control during the laying of the membrane is extremely important the membrane should be protected either through the use of temporary boarding over its whole area or the immediate laying of the concrete slab.

### DPM System Accessories



Technical Data				
SOLCO Single Sided Lapping Tape	Single sided tape for securing laps & joints	75mm	Securing Laps & Joints	Rolls
SOLCO Double sided Butyl Jointing Tape	Butyl Adhesive Tape	50mm x 10m	Butyl based double sided tape for joints and laps	Rolls
SOLCO Top Hat Units	Polymeric	Various	For sealing around penetrations through gas membrane	Each
Solcourse GR DPC	A flexible Tri-polymer DPC	300mm - 1000mm	To prevent the transmission of Radon, CO <sub>2</sub> , Methane Gas & Hydrocarbons	20m Rolls
SOLCO Radon Sump Units	Part of the Radon Protection System	430 x 430 x 220mm	Radon Sumps are used in full protection areas, for sub floor depressurisation.	Each
SOLCO XL Jointing Tape	Reinforcing Tape	100, 150 & 300mm	Over-band tape self-adhesive	20m Rolls
SOLSEAL Bitumen Primer	Primer for SA Membrane	5L & 25L	Surface Primer	Drums
SOLCO Protection Boards	Bitumen / Polymeric	3mm thick	For heavy duty use	2m x 1m
SOLCO Corrugated Board	Plastic Corrugated	2mm thick	For light duty use	2m x 1m

### DPC System Accessories

Product	Description	Size(s) / Coverage	Pack Sizes
SOLCO DPC Joint Support System	Polypropylene Support Boards used in conjunction with Solco Butyl DPC Jointing Tape	15 No. 350 x 220mm 1No. Solco Butyl Jointing Tape	System
SOLCO DPC Lap Adhesive	A brush applied synthetic rubber / resin mixture. It is used to seal joints between Solcourse DPCs, cavity trays & preformed cloak unit	750ml (Covers approx 4-5m <sup>2</sup> )	Cans
SOLCO DPC Mastic	A thick synthetic rubber mastic adhesive with gap filling properties up to 6mm. Solco DPC Mastic is suitable for bonding surface-fixed	Coverage is 1.2 to 2m <sup>2</sup> per litre. A 400ml Cartridge equates to 14	2.5 litres Tins
SOLCO DPC Fixing Strips	Solcourse DPC Fixing Strip is corrosion resistant rigid plastic strip. It is used to surface fix Solcourse cavity trays and preformed cloaks	25mm x 2mm x 2m pre-drilled c/w DPC Fixing pins	Pack of 40 LM
SOLCO DPC Fixing Pins (Masonry)	Solco DPC Fixing Pins for Masonry are corrosion resistant and can be used for surface fixing Solcourse high performance DPC systems	6mm x 35mm Fixing pins	Pack of
SOLCO DPC Fixing Pins (Insulation)	Solco DPC Fixing Pins for Insulation are corrosion resistant and can be used for surface fixing to the rigid insulation of composite inner	6mm x 35mm Fixing pins	Pack of
SOLCO Membrane Fixing plugs	The fixing plug is used in damp proofing applications, to secure the specialist membranes to the base material	70mm x 30mm (head) Sealing washer also available	Pack of 100