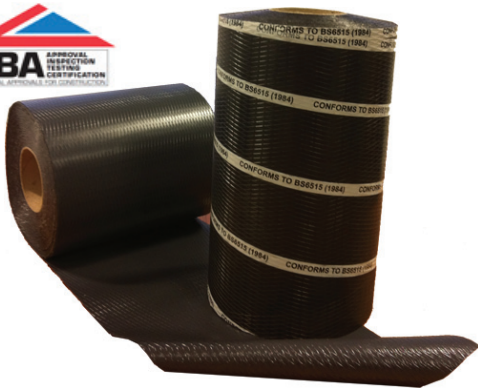


Last Issue Date: 22.12.11

### SOLCOURSE Polythene DPC



- Manufactured from Recycled material
- CE Marked
- Conforms to BS6515 (1984)
- Cost effective
- Safe & Clean to handle
- Suitable for use with the Solco DPC System Accessories

#### Description

Solcourse damp proof course is made from 100% recycled polythene, conforms to BS 6515 (1984).

For use in brick, stone and concrete walls Solcourse Polythene, DPC provides a robust damp proof barrier to prevent the rise of damp in structure walls. To be compliant with current building regulations a damp proof course should be built into the mortar bed approximately 150mm above the structure base, it can be used in vertical, horizontal, stepped and cavity tray applications.

Solcourse damp proof course comes in a range of sizes to suite various project applications. A cut-to-width service is also available on demand. It is flexible and has a bold embossing to both sides to promote improved adhesion to mortar. A full range of DPC system accessories are available.

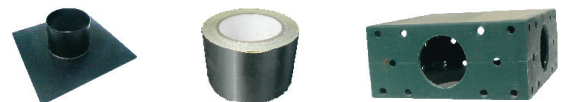
Roll Width	Roll Length	Roll Weight
100mm	30m	2.1 kg
112.5mm	30m	2.3 kg
150mm	30m	3.1 kg
225mm	30m	4.8 kg
300mm	30m	6.3 kg
337.5mm	30m	7.2 kg
450mm	30m	9.5 kg
900mm	30m	19.0 kg

#### Jointing & Surface Fixing

When jointing Solcourse DPC a minimum of 100mm is to be joined / adhered using the Solco Double Sided Butyl Tape.

To ensure a satisfactory connection to the inner leaf of cavity construction is made, Solco Primer should be firstly applied then the Solco DPC Fixing strip and pins should be used.

#### DPC System Accessories



Technical Data				
SOLCO Foil Backed Jointing Tape	Single sided tape for securing laps & joints	75mm x 50m	Securing Laps & Joints	Rolls
SOLCO Double sided Butyl Jointing Tape	Butyl Adhesive Tape	50mm x 10m	Butyl based double sided tape for joints and laps	Rolls
SOLCO Top Hat Units	Polymeric	Various	For sealing around penetrations through gas membrane	Each
SOLCOURSE GR DPC	A flexible polyethylene DPC with an aluminium foil	300mm - 1000mm	To prevent the transmission of Radon, CO2 & Methane Gas	20m Rolls
SOLCO Gas Sump Units	Part of the Radon Protection System	430 x 430 x 220mm	Radon Sumps are used in full protection areas, for sub floor depressurisation.	Each
SOLCO XL Jointing Tape	Reinforcing Tape	100, 150 & 300mm	Over-band tape self-adhesive	20m Rolls
SOLCO Primer	Primer for SA Membrane	5L & 25L	Surface Primer	Drums
SOLCO Protection Boards	Bitumen / Polymeric	3mm thick	For heavy duty use	2m x 1m
SOLCO Corrugated Board	Plastic Corrugated	2mm thick	For light duty use	2m x 1m