

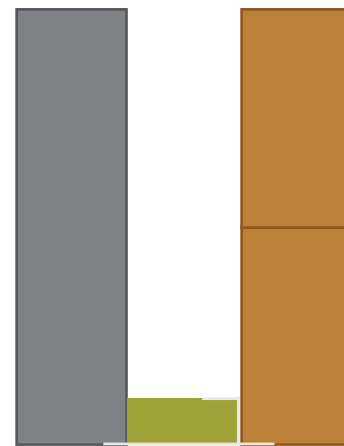
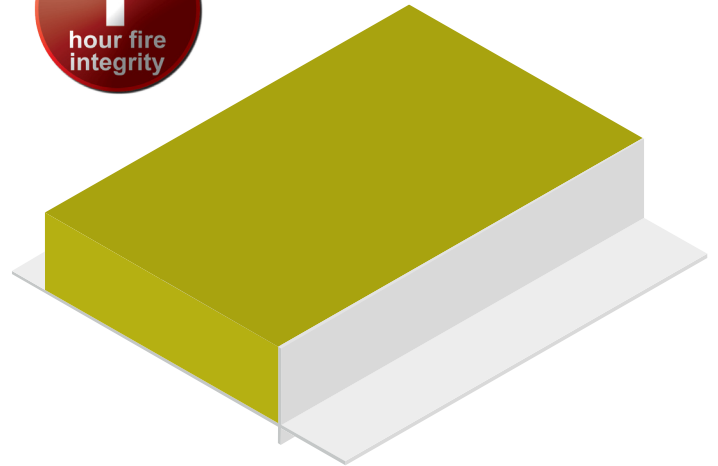
datasheet

Solcourse Fire Rated Cavity Closer



The Solcourse Fire Rated Cavity Closer is a rigid PVCu profile, with flexible weatherseal, insulated with non-combustible rockfibre insulation, achieving 1 hour fire integrity. Preferred by specifiers and ideal for all types of building work including major contracts. Four in one rockfibre insulation, providing a fire, thermal and acoustic solution as well as environmental benefits (zero ODP and GWP).

Complies with the Part L Building Regulations. Prevents cold bridging, eliminating moisture, mould and staining around windows and doors.



Plan view

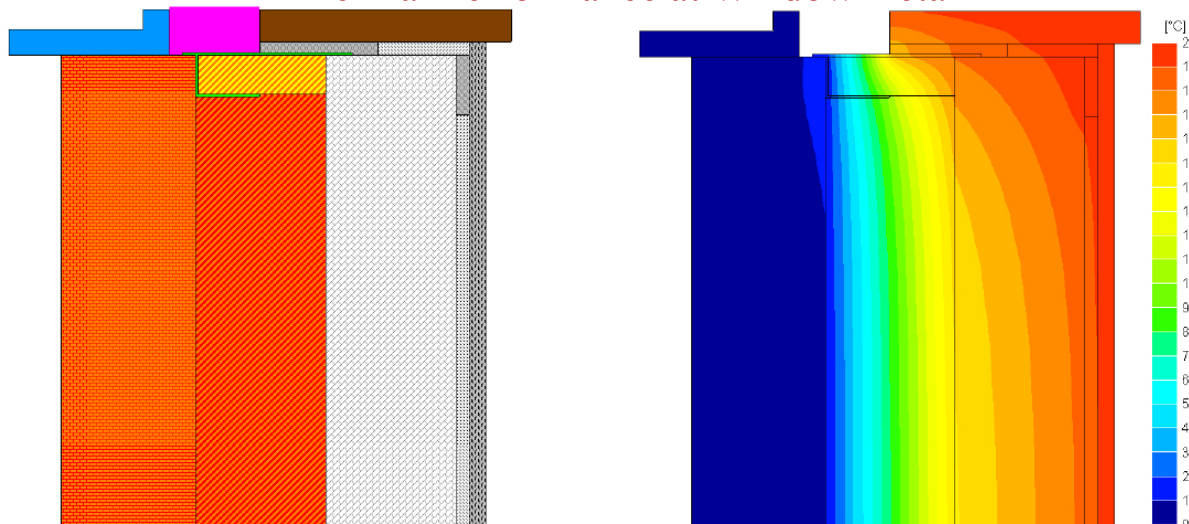
Key Features:

- Closes off cavities around window and door reveals
- 1 hour fire integrity
- Rigid PVCu profile
- Flexible weatherseal helps prevent drafts around window and door reveals
- Available in cavity widths from 50 to 150mm
- Easy to fit, simply nail flange to blockwork or use suitable adhesive
- Complies to Part L 2010
- Prevents cold bridging
- 2.4m lengths
- Also available with single flange for check reveal detail
- Insulated with non-combustible rockfibre
- Insulation ODP and GWP rating zero



Solcourse Fire Rated Cavity Closer

Thermal Performance at Window Detail



Detail	Default F-value	F-value	Default Ψ -Value	Ψ -Value
Jamb with Solcourse FR Cavity Closer (100mm cavity)	0.75	0.924	0.05	0.016
Sill with Solcourse FR Cavity Closer (100mm cavity)	0.75	0.944	0.04	0.011

The F-values are well above the value of 0.75 specified in IP1/06 to avoid mould growth, and the Ψ -values are well below the default values in IP1/06. Solcourse products have been assessed using software that complies with the standard for thermal bridge calculations BS EN ISO 10211-2007. The conventions for calculations specified in the BRE document BR497 were followed. The results are compared with the criteria set in the BRE Information Paper IP1/06 'Assessing the effects of thermal bridging at junctions and around openings' which is referenced in Building Regulations.

Installation

Easily installed, simply cut the jamb profile to the height of the window or door opening plus 75mm to allow the bottom edges to drop into the cavity below the sill. Once the jamb sections are installed measure the required width for the sill section and cut a length to but tightly to the jamb sections. Push fit the sections into the openings which can be secured by nailing to block or using a suitable adhesive.

Standards

Solcourse FR Cavity Closers use rockfibre mineral wool which conforms to BS EN 13162: 2001 Thermal Insulation products for buildings, factory made mineral wool products specification.

Environmental

Solcourse's rockfibre mineral wool has no CFCs, HCFCs in the manufacturing process and represents no known threat to the environment. Solcourse's rockfibre mineral wool has a low impact on the environment and is classified as zero ODP and zero GWP.

Standard Specifications

Lengths	2.4m lengths
Standard Cavity Widths	50 to 150mm
Packaging	Packed in polythene sleeves
Insulation	Non combustible High Density Rockfibre (ODP and GWP rating zero)
PVCu Profile	Manufactured with rigid PVCu

Specification Statement

The insulated cavity closer around window and door openings is to be Solcourse Fire Rated Cavity Closer, cavity width*mm, supplied by Solco, Unit 2 Stadium Industrial Estate, Cradock Road, Luton, LU4 0JF, and installed in accordance with the manufacturer's recommendations.

*Insert required cavity width

Cold Bridging

Cold bridges are sections through the fabric of significantly lower thermal resistance than the rest of the construction. Cold bridging commonly occurs at window and door openings and usually shows itself through so called pattern staining. A cold-bridge through an external frame attracts moisture as surface condensation which attracts dirt and dust. Surface condensation that gives rise to mould growth and damage to internal plaster and paint work, confirming more efficient insulation is required to overcome this problem.

Solution

Solcourse insulated cavity closers will significantly reduce the risk of cold bridging around window and door openings when fitted to the manufacturer's recommendations.

Fire Properties

Solcourse Fire Rated Cavity Closers are manufactured using Rockfibre mineral wool which achieves a fire classification of Euroclass A1 as defined in BS EN 13501-1.

The Solcourse FR Cavity Closer has been tested at Warrington Fire Research achieving 1 hour's fire integrity. The Eco-Closer Cavity Closer's are tested to BS 476: Part 20

Warrington Fire Research Certificate number: 189654

Health & Safety

Solcourse has an approved Health and Safety Policy and is committed to working and supplying products safely. Solcourse has assessed products as required by Substances Hazardous to Health Regulations (COSHH). A Solcourse COSHH data sheet is available and can be downloaded from the Solcourse website.



Solco
Unit 2, Stadium Industrial Estate
Cradock Road
Luton, LU4 0JF
Tel: 0808 168 6927
Email: enquiries@solco.co.uk
Web: www.solco.co.uk

For technical support, telephone 0808 168 6927
www.solco.co.uk enquiries@solco.co.uk