

SOLSEAL Roadcoat Barrier



Solseal Roadcoat Barrier is a cold applied two coat oxidised cutback bitumen damp proof coating which when cured forms an impermeable water and water vapour barrier

- Quick drying and resistant to rain once cured
- Suitable for use with drinking water tanks.
- Protective coating for concrete structures including green concrete
- Resistant to sulphates and ground salts
- Easily applied by brush roller or spray
- Excellent adhesion to protect Concrete, Masonry & Steel



Colour	Product Code	Container Size
Black Liquid	SOLSEALRCB25	25 Litre
	SOLSEALRCB200	200 Litre

SOLSEAL - Liquid Applied Systems

Last Issue Date: 20.02.17
Rev 2

Description

Solseal Roadcoat Barrier provides an effective waterproof, weatherproof, corrosion resistant protective coating.

Solseal Roadcoat Barrier forms an odourless and taint free bitumen film once cured is suitable for the protection of concrete structures.

Solseal Roadcoat Barrier is resistant to low concentrations of alkalis and acids and can withstand prolonged oxidation.

Solseal Roadcoat Barrier is suitable for application to a wide variety of materials including iron and steel, lead, zinc, aluminium, asbestos - cement, concrete, stone, wood, felt and brick and is mainly used for:

- As a protective coating for concrete structures, stone, brick, concrete screeds and sand/cement surfaces.
- Metal protection - corrugated iron sheets, fire escapes, stairways, ladders, storage tanks, gutters, down pipes, fences, railings, gates etc.
- Protecting drinking water tanks
- Overcoating felt/wood.

Applications

- Concrete Bridge structures
- Subways
- Culverts
- Retaining Walls
- Water Retaining Structures

Specification

Solseal Roadcoat Barrier conforms to BS EN 12591:2009, BS EN 13924:2006 & BS3690: Part 1 of viscosity grade 50 seconds.

Solseal Roadcoat Barrier conforms to Dtp Specification for Highway Works May 2005 series 2000 clause 2004.4 (Proprietary waterproofing material)

Preparation & Installation

As with all surface coatings, preparation of the surface is of great importance and will influence the degree of adhesion obtained and the life of the coating. All surfaces must be sound, stable and thoroughly clean and dry.

Metal surfaces should be wire brushed to remove rust. Where long term protection is required an initial treatment of a rust inhibitive product such as red lead or zinc phosphate should be used. Loose or blistered paint should be removed as should tar based paint systems.

New galvanised surfaces should be roughened with a wire brush or treated with a proprietary etch primer. Porous surfaces should be primed with Solco Bitumen Primer

Solseal Roadcoat Barrier is ready for use and should not be thinned.

Apply by brush, roller or sprayer.

A minimum of two coats of Solseal Roadcoat Barrier should be applied, the first been allowed to dry (normally 2-4 hours depending on weather conditions) before the second is applied.

Protective coating on concrete etc

Since concrete and some stone surfaces may be porous, an initial primer coat Solco Bitumen Primer should be applied

Drinking water tanks

Surfaces should be dry and free of millscale, rust and dirt. All surfaces should be degreased immediately prior to coating. Brush application is preferred to ensure that all recesses, edges, rivet and bolt heads and nuts are coated thoroughly. Drying may be assisted by the provision of a forced air draught.

A three coat system is suggested for the internal treatment of drinking water tanks. Apply 3 coats, normally allowing a 24 hours drying period between coats. It is important that the first coat is thoroughly dry before application of the second coat.

Use clean, uncontaminated equipment. After the third coat has dried thoroughly allow at least seven days for the coating to set. Before the tank is put into service it should be filled with cold drinking water and drained after not less than 4 hours. If a taste is detected in this water, the flushing should be repeated. The paint is not suitable for hot water tanks.

Technical Properties	
Type Of Solvent	Kerosene
Flashpoint	38°C
Specific Gravity @ 20°C	0.9
Viscosity @ 20°C	700-1200cps
Coverage	4 – 6m ² per litre depending on porosity of substrate 11m ² per litre on non porous surfaces
Drying Time	2 – 4 hours at 20°C
Service Temps	-30 to +70°C
Application Temps	-5-35°C. Surfaces must be free from ice and water
Film Thickness Per Coat @ 11m ² / Ltr	Wet – 0.15-0.175mm Dry – 0.1mm
Chemical And Water Resistance	Resistant to: most salt solutions, dilute acids and alkalis, water and alcohol. Not resistant to: oils, solvents and some detergent solutions

Cleaning tools

Tools may be cleaned by using Solco Solklens Cleaner. Spillages should be wiped off surfaces before the bitumen paint has set.

Storage

Solseal Roadcoat Barrier contains a flammable solvent, and all normal precautions against fire must be taken during both storage and use. Store in original container in cool dry conditions. Keep away from sources of ignition.

Shelf Life - 24 months from date of manufacture in tightly sealed, undamaged containers

Health & Safety - Consult MSDS for full list of hazards.

Solseal Waterproof System Ancillaries



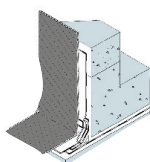
Solcem Solklens is a specially formulated solvent for cleaning resin products from tools and equipment before the resin has hardened, and for removing any residual release agent from formwork. Must not be used as thinners.

Technical Data	
Packaging	5 & 25 Litres



Soldrain Double Soldrain Double can be used as a protective barrier between the structure and the surrounding fill and act as a protective layer to the primary waterproofing membranes. Soldrain Double relieves the hydrostatic pressure by channeling the ground water away from the structural waterproofing, protecting the structure.

Technical Data	
Sheet Size	2.0m x 20m
Sheet Thickness	1mm
Roll Weight	28kg



Solco HD Bitumen Protection Board is a tough, reinforced flexible bitumen modified board for the protection of adhesive waterproofing membrane and other types of waterproofing membranes against damage by abrasive backfill materials and poured concrete

Technical Data	
Sheet Size	1.0m x 2.0m
Thickness	3mm / 6mm
Weight	8kg / 16kg



Solco XL Jointing / Reinforcing Tape is a self adhesive bitumen tape is used as reinforcing / over-banding tape for securing waterproofing and gas protection membranes at overlaps edge and corner details.

Technical Data	
Roll Width(s)	100 / 150 / 300mm
Roll Length	10m
Thickness	1.5mm



Solseal Bitumen Primer is a liquid applied, low viscosity bitumen solution used to prime and seal porous substrates and promotes the adhesion of bituminous waterproofing systems prior to application of Solsheet Membranes and other bitumen coatings

Technical Data	
Packaging	10 & 25 Litres