

SOLSEAL

Liquid Asphaltic Coating

Solseal Liquid Asphaltic Coating is a liquid applied coating which when cured, forms an impermeable water and water vapour proof membrane



Benefits

- Water and water vapour barrier
- High bond strength
- Cold applied, jointless membrane
- Fast curing, elastic and flexible
- Easily applied to difficult profiles
- Provides a barrier to radon gas
- Can be used in potable water systems

Applications

- Roofs (non-exposed)
- Bathrooms, Kitchens & Shower Areas
- Floor Slabs
- Basements & Sub-Structures
- Swimming Pools
- Planter Boxes
- Roof Gardens
- Tunnels
- Bridge Abutments
- Steelwork



SOLSEAL - Liquid Applied Systems

Issue Date: 10.06.16

Description

SOLSEAL Liquid Asphaltic Coating is a solvent based, full bodied black bitumen barrier coating. When dry, the product forms an odourless and taint free bitumen film suitable for the protection of above and below ground concrete, brickwork and blockwork.

SOLSEAL Liquid Asphaltic Coating provides an effective waterproof, weatherproof, corrosion resistant protective coating. It is resistant to low concentrations of alkalis and acids and can withstand prolonged oxidation. It is suitable for application to a wide variety of materials including iron and steel, lead, zinc, aluminium, asbestos - cement, concrete, stone, wood, felt and brick and is mainly used as a protective coating for concrete structures, stone, brick, concrete screeds and sand/cement surfaces.

Cost Benefits

- Simple and rapid application
- Overcoat in 8 - 12 hours in ventilated conditions
- Can be applied to surface dry and green concrete, without primer
- Tins can be opened and re-sealed with no surface skinning inside the can.

SOLSEAL Liquid Asphaltic Coating is immediately impervious to water and when fully protected and subjected to normal service conditions, will provide an effective barrier to the transmission of liquid water and water vapour for the design life of the structure in which it is incorporated.

The product offers levels of protection required for below ground structures described in BS 8102 : 1990, grades 1,2,3 and 4.

J30 - Liquid Applied Tanking/Damp Proofing in accordance with NBS Clauses.

SOLSEAL Liquid Asphaltic Coating conforms to BS EN 12591:2009, BS EN 13924:2006 & BS3690: Part 1 of viscosity grade 50 seconds.

Technical Data

Type of Solvent	Kerosene
Flashpoint	38°C
Specific Gravity @ 20°C	0.9
Viscosity @ 20°C	700-1200cps
Coverage Rate	4 – 6m ² per litre depending on porosity of substrate 11m ² per litre on non porous surfaces
Drying Time	2 – 4 hours at 20°C
Service Temps	-30 to +70°C
Application Temps	-5-35°C. Surfaces must be free from ice and water
Film Thickness Per Coat @ 11m ² / Ltr	Wet – 0.15-0.175mm, Dry – 0.1mm
Chemical And Water Resistance	Resistant to: most salt solutions, dilute acids and alkalis, water and alcohol. Not resistant to: oils, solvents and some detergent solutions
Water Vapour Permeability DIN 52615	3 X 10 ⁻¹² Kg / m ² sPa
Water Vapour Transmission ASTM E96	1.67g /m ² /24 hours
Diffusion Coefficient for Radon	1.7 x 10 ⁻¹³ m ² s ⁻¹
Diffusion Length for Radon	0.28mm
UV Resistance	Limited, protect within 28 days.
Shelf Life	24 Months
Pack Sizes	5, 25 & 200Lt

Surface Preparation & Installation

As with all surface coatings, preparation of the surface is of great importance and will influence the degree of adhesion obtained and the life of the coating. All surfaces must be sound, stable and thoroughly clean and dry. Metal surfaces should be wire brushed to remove rust. Where long term protection is required an initial treatment of a rust inhibitive product such as red lead or zinc phosphate should be used. Loose or blistered paint should be removed as should tar based paint systems. New galvanised surfaces should be roughened with a wire brush or treated with a proprietary etch primer. Porous surfaces should be primed with Solco Bitumen Primer.

SOLSEAL Liquid Asphaltic Coating is ready for use and should not be thinned. Apply by brush, sheep skin disposable rollers or airless spray. A minimum of two coats of Bitumen Paint should be applied, the first been allowed to dry (normally 2-4 hours depending on weather conditions) before the second is applied.

Since concrete and some stone surfaces may be porous, an initial primer coat of Solco Bitumen Primer should be applied.

Tools may be cleaned by using white spirit. Spillage's should be wiped off surfaces before the bitumen paint has set.

Protection

The membrane must always be protected by a layer of concrete, a screed of 50 mm minimum thickness, or by brickwork or blockwork. Alternatively, the membrane should be protected during backfilling by a thickness of EP Protection Board. Care should be taken to avoid membrane damage during these operations.

Internal Tanking

When subjected to negative water pressure, the membrane should be internally loaded by erecting a single skin of brickwork or blockwork with a minimum 20 mm cavity. The cavity should be filled using an approved non shrink grout as construction proceeds.

Movement Joints

The membrane should be reinforced at movement joints using Solsheet self adhesive membrane, and by applying additional layers of product in these areas. Refer to Solco Building Products for specific recommendations.

Day Joints

At day joints, the liquid membrane should overlap the existing cured membrane by at least 100 mm. If the lapping joint is dirty or contaminated, clean using Solcem Solklens solvent.

Storage

SOLSEAL Liquid Asphaltic Coating contains a flammable solvent, and all normal precautions against fire must be taken during both storage and use. Store in original container in cool dry conditions. Keep away from sources of ignition.

Health & Safety

Consult MSDS for full list of hazards.

Solseal Waterproof System Ancillaries



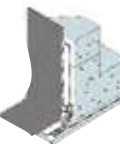
Solcem Solklens is a specially formulated solvent for cleaning resin products from tools and equipment before the resin has hardened, and for removing any residual release agent from formwork. Must not be used as thinners.

Technical Data	
Packaging	5 & 25 Litres



Soldrain Double can be used as a protective barrier between the structure and the surrounding fill and act as a protective layer to the primary waterproofing membranes. Soldrain Double relieves the hydrostatic pressure by channeling the ground water away from the structural waterproofing, protecting the structure.

Technical Data	
Sheet Size	2.0m x 20m
Sheet Thickness	1mm
Roll Weight	28kg



Solco HD Bitumen Protection Board is a tough, reinforced flexible bitumen modified board for the protection of adhesive waterproofing membrane and other types of waterproofing membranes against damage by abrasive backfill materials and poured concrete.

Technical Data	
Sheet Size	1.0m x 2.0m
Thickness	3mm / 6mm
Weight	8kg / 16kg



Solco Solcourse HP, GR and 3S DPC

A range of polymeric dpc's and preformed cavity trays, compatible with all Solco membranes.

Technical Data	
Roll Width(s)	100 - 900mm
Roll Length	20m



Solco XL Jointing / Reinforcing Tape is a self adhesive bitumen tape is used as reinforcing / over-banding tape for securing waterproofing and gas protection membranes at overlaps edge and corner details.

Technical Data	
Roll Width(s)	100 / 150 / 300mm
Roll Length	10m
Thickness	1.5mm